



BOTERO.

A Tradition of Artists

Botero Homes Gallery, Inc.

&

Vintage Security LLC

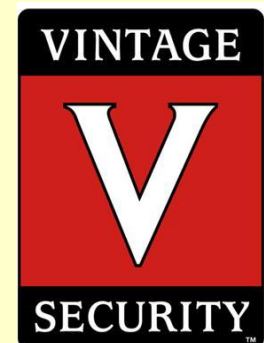


Fox III

www.vintagesecurity.com

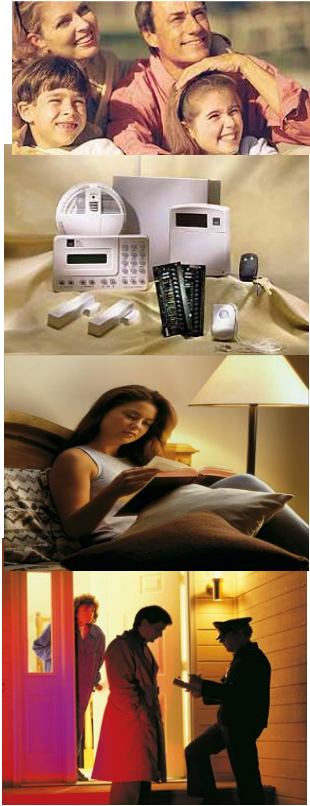
877-767-1800

VA DCJS # 11-3378



Technology for Your New Botero Home

Security System



Protecting your loved ones and your new home from

burglary, fire, carbon monoxide, water damage and other perils is the #1 priority for *Vintage Security*. Our monitoring station and service department are on alert 24 hours a day to protect your family.

Vintage Security and Botero Homes Gallery, Inc have teamed up to offer you this incredible opportunity to protect your new Botero Home, your valuable possessions, and your loved ones.

Standard Security System Installation Includes:

- **4 Door Contacts**—Contact all 1st Floor and Basement Exterior Doors (Basement Rec, Interior Garage, Breakfast Slider and Foyer)
- **3 Dual Tech Motion Detectors**
- **3 Alpha Keypads**—Interior Garage Door, Front Door, and Master Bedroom
- **1 GE Pro 6000 Master Control Panel with backup battery & 8 Hardwired Zones & 76 Wireless Receiver for future expansion)**
- **1 RJ31X Phone Jack for Line Seizure**
- **1 Interior Sirens**—Main Floor

Monitoring and custom additions will be discussed with your personal security consultant.

Whole House Audio Prewire

Homeowners

often desire to provide various rooms of the home with music, news, or sports from a main sound source. Imagine listening to your favorite songs not only in the dining room but also in the master bedroom, the kitchen, on your deck, or in your basement rec room. **As a standard feature, Botero Homes Gallery, Inc has prewired the following 5 rooms for whole house music: Basement Rec, Kitchen, Dining Room, Master Bedroom, and Outside Deck Area.** You simply add recessed speakers in the ceilings that will fill your home with luxurious sound without taking up any room space.



Home Theater Prewire

Experience

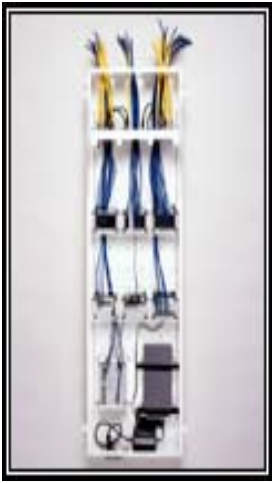
movies the way they were meant to be viewed when you have a true 5.1 surround sound system installed. We offer **Klipsch In-Wall** speakers, as well as **Klipsch** entire Reference Series line of speakers. **As a standard feature, your new Botero Home will have a complete 5.1 surround sound prewire only (2 Fronts, 1 Center, 2 Rears, and 1 Sub) wired in the Family Room.**



Telephone-Video-Data

Botero Homes Gallery, Inc has included a

Vintage Connection Center and the following wiring and wall outlets as a standard feature in home. The **Vintage Connection Center** is a structured wiring and connectivity solution that manages and distributes broadband, high-speed Internet, telephone, cable or satellite TV, home networking and integrated home control. The **Vintage Connection Center** eliminates the messy cable around your home by organizing them in a spacious and organized box. With the **Vintage Connection Center**, you will have complete cable management and access to your home's internal "nervous" system.



The volume of data in today's world requires the cables behind your walls connecting the **Vintage Home Wiring System** to be of the highest quality. Cables used throughout the system are known as "Series 6 Coaxial Cables" (or RG-6) and "Cat 5 Twisted Pair Cables" (or CAT-5e). RG-6 cables are used to distribute video signals throughout your house (i.e. cable, satellite TV and video). CAT-5 cables are used to distribute phone, fax, and data networking signals throughout your house. These cables run to wall outlets located throughout your home. **As a standard feature, your new Botero Home will have the following outlets**



Basement

Home Theater	Quad Outlet (2 CAT-5E & 2 RG-6)
Rec Room	Quad Outlet (2 CAT-5E & 2 RG-6)
Bedroom #5	Single Phone Outlet (1 CAT-5E)
	Single Phone Outlet(1 CAT-5E)
	Dual Outlet (1RG-6 & 1 CAT-5E))
Utility Room	Vintage Connection Center (1x8 Passive Cable Module and 4x8 Telecom Module and 1x12 Telecom Module and 2 Third Party Mounting Brackets for Cable/DSL Modems or a Router)



Main Level

Study	Dual Phone Outlet (2 CAT-5)
	Dual Outlet (1 CAT-5 and 1 RG-6)
Kitchen	Quad Outlet (2 CAT-5E and 2 RG-6)
Family Room	Quad Outlet (2 RG-6 and 2 CAT-5)
Living Room	Single Phone Outlet (1 CAT-5E)
Laundry Room	Dual Outlet (1 CAT-5E and 1 RG-6)



Upper Level

Master Bedroom	Single Phone Outlet (1 CAT-5E)
	Quad Outlet (2 RG-6 and 2 CAT-5E)
Master Sitting	Quad Outlet (2 RG-6 and 2 CAT-5E)
Master Bathroom	Dual Outlet (1 CAT-5E and 1 RG-6)
Bedroom #2	Single Phone Outlet (1 CAT-5)
	Dual Outlet (1 RG-6 and 1 CAT-5E)
Bedroom #3	Single Phone Outlet (1 CAT-5)
	Dual Outlet (1 RG-6 and 1 CAT-5E)
Bedroom #4	Single Phone Outlet (1 CAT-5)
	Dual Outlet (1 RG-6 and 1 CAT-5E)






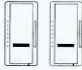
Satellite Prewire Run 4 RG-6 to Attic
A 2 inch conduit is run from basement to attic for future expansion

Home Theater

Experience movies the way they were meant to be viewed!!

As a standard feature in your new Botero Home, you will receive the following 84" inch home theater package in your Basement Theater Room.

Home Theater 84" HDTV-Ready Theater System

	<p>Universal Remote Control: The Universal hand-held, custom programmed remote, controls all components included in the system.</p>
	<p>Mitsubishi Projector: 16:9 widescreen DLP HDTV-ready front projector, mounts on ceiling approximately 12' to 14' from screen wall.</p>
	<p>Vutec Wall-Mounted 84" Cinema Screen: 16:9 permanently tensioned wall screen with black velvet frame.</p>
	<p>Bronze 5.1 Klipsch Speaker Package</p> <p>Klipsch In-Wall Speakers: Five (5) speakers included. Mounted on the left, right, and centered below the screen, as well as in the ceiling to the left and right to the rear of viewing area. Installs flush into standard depth wall. Can be painted to blend into room décor.</p> <p>Klipsch 8" Powered Subwoofer: Creates bass sounds. Placed on the floor in one of the four corners of the room.</p>
	<p>Integra Audio/Video Receiver: 90-watt audio /video receiver with Dolby Digital 5.1 surround sound.</p>
	<p>Integra DVD Player: Progressive scan single-disc DVD player.</p>
	<p>JVC SVHS VCR: Offers high-resolution Super VHS video playback and recording. Front input port provides a very simple way of connecting a video game machine or camcorder to the system.</p>
	<p><i>Integration of customer-furnished satellite receiver or cable box.</i></p>
	<p>Panamax Surge Protector: Panamax high-quality surge protectors for all electronic equipment and projector.</p>
	<p>Equipment Rack: Salamander 4-shelf black equipment rack features clean, classic lines that showcase the audio-video equipment.</p>
	<p>Lutron Dimming System: Allows for automated lighting in the theater and replaces regular light switches.</p>