



BOTERO.

A Tradition of Artists

*Botero Homes Gallery, Inc.*

&

*Vintage Security LLC*

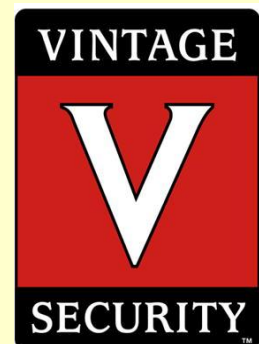


Spring II

[www.vintagesecurity.com](http://www.vintagesecurity.com)

877-767-1800

VA DCJS # 11-3378



# Technology for Your New Botero Home

## Security System

Protecting your loved ones and your new home from burglary, fire, carbon monoxide, water damage and other perils is the #1 priority for **Vintage Security**. Our monitoring station and service department are on alert 24 hours a day to protect your family.

Vintage Security and Botero Homes Gallery, Inc have teamed up to offer you this incredible opportunity to protect your new Botero Home, your valuable possessions, and your loved ones.

### Standard Security System Installation Includes:

- 9 Door Contacts—Contact all 1<sup>st</sup> Floor and Basement Exterior Doors (1 Basement Rec, 1 Basement Office, 1 Master Bedroom, 1 Foyer Door, 2 Living Room, 1 Family Room, 1 Side Entry Door, 1 Interior Garage Door)
- 3 Dual Tech Motion Detectors - 2 on Main Level (Living Room and Back Foyer to cover rear stairwell) and 1 Basement Rec Room
- 2 Alpha Keypads—Interior Garage Door and Front Door
- 1 GE Pro 4 Master Control Panel with backup battery & 16 Hardwired Zones & Wireless Receiver)
- 1 RJ31X Phone Jack for Line Seizure
- 1 Interior Siren—Main Floor

Monitoring and custom additions will be discussed with your personal security consultant.



## Whole House Audio Prewire

Homeowners often desire to provide various rooms of the home with music, news, or sports from a main sound source. Imagine listening to your favorite songs not only in the dining room but also in the master bedroom, the kitchen, on your deck, or in your basement rec room. As a standard feature, Botero Homes Gallery, Inc has prewired the following 8 rooms for whole house music: Basement Rec Room, Dining Room, Living Room, Study, Kitchen, Master Bedroom, Master Bathroom, and Deck Area. You simply add recessed speakers in the ceilings that will fill your home with luxurious sound without taking up any room space.



## Home Theater Prewire

Experience movies the way they were meant to be viewed when you have a true 5.1 surround sound system installed. We offer Klipsch In-Wall speakers, as well as Klipsch entire Reference Series line of speakers. As a standard feature, your new Botero Home will have a complete 5.1 surround sound prewire only (2 Fronts, 1 Center, 2 Rears, and 1 Sub) wired in the Basement Media Room. The basement media room is also prewired for a ceiling mounted projector.

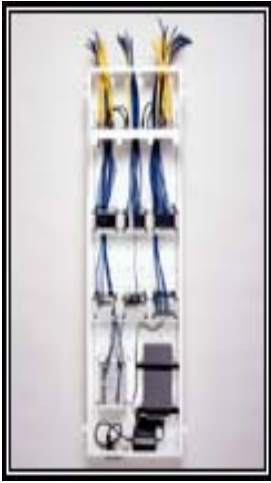


# Telephone-Video-Data

Botero Homes Gallery, Inc has included a

**Vintage Connection Center** and the following wiring and wall outlets as a standard feature in home. The **Vintage Connection Center** is a structured wiring and connectivity solution that manages and distributes broadband, high-speed Internet, telephone, cable or satellite TV, home networking and integrated home control. The **Vintage Connection Center** eliminates the messy cable around your home by organizing them in a spacious and organized box. With the **Vintage Connection Center**, you will have complete cable management and access to your home's internal "nervous" system.

The volume of data in today's world requires the cables behind your walls connecting the **Vintage Home Wiring System** to be of the highest quality. Cables used throughout the system are known as "Series 6 Coaxial Cables" (or RG-6) and "Cat 5 Twisted Pair Cables" (or CAT-5e). RG-6 cables are used to distribute video signals throughout your house (i.e. cable, satellite TV and video). CAT-5 cables are used to distribute phone, fax, and data networking signals throughout your house. These cables run to wall outlets located throughout your home. **As a standard feature, your new Botero Home will have the following outlets**



## Basement

Home Theater	Quad Outlet (2 CAT-5E and 2 RG-6)
Bar Area	Single Phone Outlet
Rec Room	Triple Outlet (1 CAT-5E & 2 RG-6)
Office	Dual Outlet (2 CAT-5)
	Single Cable Outlet (1 RG-6)
Elevator	Single Phone Outlet (1 CAT-5)—Note Elevator company responsible for connection
Utility Room	Vintage Connection Center (1x8 Passive Cable Module and 4x8 Telecom Module)

## Main Level

Living Room	Double Outlet (1 RG-6 and 1 CAT-5)
Study /Parlor	Dual Phone Outlet (2 CAT-5E) Brass Floor Outlet
	Single Cable Outlet (1 RG-6)
Family Room	Triple Outlet (2 RG-6 and 1 CAT-5)
Kitchen	Single Phone Outlet (1 CAT-5)
Master Bedroom	Single Phone Outlet (1 CAT-5)
	Triple Outlet (2 RG-6 & 1 CAT-5)
	Plasma Prewire above the fireplace
Master Bathroom	Single Cable Outlet (1 RG-6)

## Upper Level

Suite #1	Single Cable Outlet (1 RG-6)
	Single Phone Outlet (1 CAT-5)
Suite #2	Single Cable Outlet (1 RG-6)
	Single Phone Outlet (1 CAT-5)
Suite #3	Single Cable Outlet (1 RG-6)
	Single Phone Outlet (1 CAT-5)
Suite #4	Single Cable Outlet (1 RG-6)
	Single Phone Outlet (1 CAT-5)
Child Study	Triple Outlet (1 RG-6 and 2 CAT-5)
Satellite Prewire	Run 6 RG-6 to Attic
	Run 2 CAT-5E and 2 RG-6 from connection center to NID (Demarc Location)